



BULL GRILL HEADS

BISON™ Charcoal, Specialty Grill



Item# 88787

STANDARD FEATURES

- Stainless Steel Construction
- Stainless Steel Grates
- Adjustable Charcoal Bed
- Heavy Duty Thermometer
- Warming Rack 210 Sq. In.
- Cooking Surface 810 Sq. In.
- Cutout - 29 1/2" W x 12 1/2" H x 18 1/2" D

COMMERCIAL GRIDDLE™ Griddle, Specialty Grill



Item# 97008 LP
Item# 97009 NG

STANDARD FEATURES

- 45,000 BTUs
- 3 Welded Stainless Steel Burners
- Piezo Igniters/ Zinc Control Knobs
- Cast Iron Chromium Plated Griddle
- Full Size Grease Tray
- Cooking Surface 556 Sq. In.
- Cutout - 22 7/8" W x 9 1/2" H x 21" D



OUTLAW™ Intro Grill



Item# 26038 LP
Item# 26039 NG

STANDARD FEATURES

- 60,000 BTUs
- 4 Cast Iron Porcelain Coated Burners
- Single Piece Dual Lined Hood
- Piezo Igniters/ Zinc Control Knobs
- Solid Stainless Steel Grates
- Heavy Duty Thermometer
- Warming Rack 210 Sq. In.
- Cooking Surface 810 Sq. In.
- Cutout - 31" W x 9 1/2" H x 21" D



STEER™ Premium Grill



Item# 69008 LP
Item# 69009 NG

STANDARD FEATURES

- 45,000 BTUs
- 3 Welded Stainless Steel Burners
- Single Piece Dual Lined Hood
- Piezo Igniters/ Zinc Control Knobs
- Solid Stainless Steel Grates
- Heavy Duty Thermometer
- Warming Rack 160 Sq. In.
- Cooking Surface 556 Sq. In.
- Cutout - 25 3/4" W x 9 1/2" H x 20 1/2" D



LONESTAR™ Premium Grill



Item# 87048 LP
Item# 87049 NG

STANDARD FEATURES

- 60,000 BTUs
- 4 Welded Stainless Steel Burners
- Single Piece Dual Lined Hood
- Piezo Igniters/ Zinc Control Knobs
- Solid Stainless Steel Grates
- Heavy Duty Thermometer
- Twin Lighting System
- Warming Rack 210 Sq. In.
- Cooking Surface 810 Sq. In.
- Cutout - 31" W x 9 1/2" H x 21" D



ANGUS™ Flagship Grill



Item# 47628 LP
Item# 47629 NG

STANDARD FEATURES

- 75,000 BTUs
- 4 Cast Stainless Steel Burners
- Infrared Burner 15,000 BTUs
- Single Piece Dual Lined Hood
- Piezo Igniters/ Zinc Control Knobs
- Solid Stainless Steel Grates
- Heavy Duty Thermometer
- SS Rotisserie Motor
- Twin Lighting System
- Warming Rack 210 Sq. In.
- Cooking Surface 810 Sq. In.
- Cutout - 31" W x 9 1/2" H x 21" D



BRAHMA™ Flagship Grill



Item# 57568 LP
Item# 57569 NG

STANDARD FEATURES

- 90,000 BTUs
- 5 Cast Stainless Steel Burners
- Infrared Burner 15,000 BTUs
- Single Piece Dual Lined Hood
- Piezo Igniters/ Zinc Control Knobs
- Solid Stainless Steel Grates
- Heavy Duty Thermometer
- SS Rotisserie Motor
- Twin Lighting System
- Warming Rack 266 Sq. In.
- Cooking Surface 1,026 Sq. In.
- Cutout - 38 1/2" W x 9 1/2" H x 21" D



DIABLO™ Flagship Grill



Item# 62648 LP
Item# 62649 NG

STANDARD FEATURES

- 105,000 BTUs
- 6 Cast Stainless Steel Burners
- Infrared Burner 15,000 BTUs
- Single Piece Dual Lined Hood
- Piezo Igniters/ Zinc Control Knobs
- Solid Stainless Steel Grates
- Heavy Duty Thermometer
- SS Rotisserie Motor
- Twin Lighting System
- Warming Rack 322 Sq. In.
- Cooking Surface 1,242 Sq. In.
- Cutout - 46" W x 9 1/2" H x 21" D



BULL GRILL CARTS

BISON™

Charcoal, Specialty Grill



Item# 88000

COMMERCIAL GRIDDLE™

Griddle, Specialty Grill



Item# 73008 LP
Item# 73009 NG

OUTLAW™

Intro Grill



Item# 26001 LP
Item# 26002 NG

STEER™

Premium Grill



Item# 69101 LP
Item# 69102 NG

LONESTAR™

Premium Grill



Item# 87001 LP
Item# 87002 NG

ANGUS™

Flagship Grill



Item# 44000 LP
Item# 44001 NG

BRAHMA™

Flagship Grill



Item# 55000 LP
Item# 55001 NG



BULLBBQ.COM





BULL COMPONENTS



DOOR/PROPANE DRAWER COMBO

(Cutout - 31" W x 20" H x 16 3/8" D)

Item# 65784



DOOR/DRAWER COMBO 30" Stainless Steel

(Cutout - 31" W x 20" H x 20 3/4" D) Item# 25876

DOOR/DRAWER COMBO 38" Stainless Steel

(Cutout - 38 1/2" W x 20" H x 20 3/4" D) Item# 55875



SINGLE DOOR LOCK & KEY

Stainless Steel (Cutout - 23" W x 15 3/4" H x 2" D)

Item# 89970



TRIPLE DRAWER SYSTEM - Stainless Steel

(Cutout - 18 1/2" W x 24 1/2" H x 16" D)

Item# 58110



PULL OUT TRASH DRAWER - Stainless Steel

(Cutout - 18 1/4" W x 24 1/2" H x 16" D)

Item# 56925



SINGLE DRAWER - Stainless Steel

(Cutout - 23 1/4" W x 4" H x 20 3/4" D)

Item# 09970



DOUBLE DRAWER - Stainless Steel

(Cutout - 12 3/4" W x 19 1/2" H x 20 3/4" D)

Item# 56985



VERTICAL DOOR - Stainless Steel

(Cutout - 15 3/4" W x 20" H x 2" D)

Item# 89975 - Right Swing

Item# 98552 - Left Swing



DOUBLE DOOR 30" - Stainless Steel

(Cutout - 31" W x 20" H x 2 1/4" D) Item# 33568

DOUBLE DOOR 38" - Stainless Steel

(Cutout - 38" W x 20" H x 2 1/4" D) Item# 34000



PROPANE DRAWER-Stainless Steel

(Cutout - 18 3/4" W x 19 3/4" H x 16 1/2" D)

Item# 56825



WARMING DRAWER - Stainless Steel

(Cutout - 28 1/2" W x 10" H x 20 1/4" D)

Item# 85747



VENTED DOUBLE DOOR 30" Stainless Steel

(Cutout - 31 1/2" W x 20" H x 2 1/2" D)

Item# 44570



VENTED VERTICAL DOOR - Stainless Steel

(Cutout - 15 3/4" W x 20" H x 2 1/2" D)

Item# 89980



SINGLE SIDE BURNER - Stainless Steel

(Cutout - 11 1/4" W x 3 1/4" H x 17 1/2" D)

Item# 60008 (LP) - Item# 60009 (NG)



SINGLE SLIDE-IN PRO SIDE BURNER W/COVER

(Cutout - 12 1/8" W x 9 1/2" H x 20 1/2" D)

Item# 60018 (LP) - Item# 60019 (NG)



DOUBLE SIDE BURNER - SLIDE-IN W/COVER

(Cutout - 12 1/8" W x 9 1/2" H x 20 1/2" D)

Item# 30008 (LP) - Item# 30009 (NG)



POWER BURNER - W/COVER

(Cutout - 21 1/4" W x 9 1/2" H x 21" D)

Item #96000 (LP) - #96001 (NG)



PREMIUM REFRIGERATOR 4.9 cu. ft.

Stainless Steel - Outdoor Rated

(Cutout - 24 1/4" W x 33" H x 23 5/8" D)

Item# 13700



REFRIGERATOR 4.5 cu. ft. - Stainless Steel

(Cutout - 20 1/2" W x 33" H x 20 3/4" D)

Item# 11001



DOUBLE DRAWER REFRIGERATOR 5.0 cu. ft.

(Cutout - 24" W x 34 1/2" H x 23" D)

Item# 17400



Also available in Double Tap option

KEGERATOR 6.6 cu. ft. - Outdoor Rated

(Cutout - 24 1/2" W x 34 3/4" H x 25 1/2" D)

Item# 17900, Doub. Item# 17950



30" BAR CENTER-Stainless Steel

(Cutout - 29" W x 9 3/4" H x 22 3/4" D)

Item# 97623

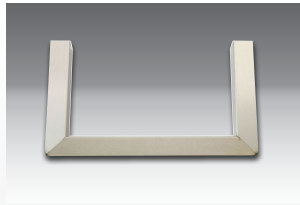


INSULATED GRILL JACKET - 30"

(Cutout - 37 7/8" W x 10" H x 22" D) Item# 47017

INSULATED GRILL JACKET - 38"

(Cutout - 45 3/8" W x 10" H x 22" D) Item# 47018



GRILL FINISHING FRAME - Stainless Steel

30" Item# 49328

38" Item# 58726

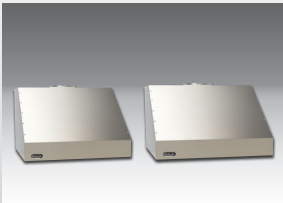


GRILL HEAD COVERS

30" Item #45005

38" Item #56006

*Cart covers & other sizes available online



VENT HOOD-TWIN FAN - Stainless Steel

36" W x 25" H x 32" D Item# 66009 - 30" Grills

42" W x 25" H x 32" D Item# 66098 - 38" Grills



ICE CHEST-Stainless Steel

(Cutout - 14 1/4" W x 15 1/2" H x 20 1/2" D)

Item# 00002



BOTTLE OPENER & CATCH

(Cutout - 6" W x 10" H x 1 7/8" D)

Item# 66006



UMBRELLA 9' - Item# 32000

UMBRELLA HOLE - Item# 16624

COVER/PLUG - Item# 16625



STAINLESS STEEL SINK & FAUCET

Sm.-(Cutout - 14 1/4" W x 7 5/8" H x 14 1/4" D)

Lg.-(Cutout - 18 1/8" W x 9 1/2" H x 16 1/8" D)

Sm. Item# 12389 | Lg. Item# 12391

*Cutout specifications listed are for general reference and not exact specifications, The Manufacturer strongly suggests that you to visit: BULLBBQ.COM to download the official product spec. sheets.